

Sample Questions

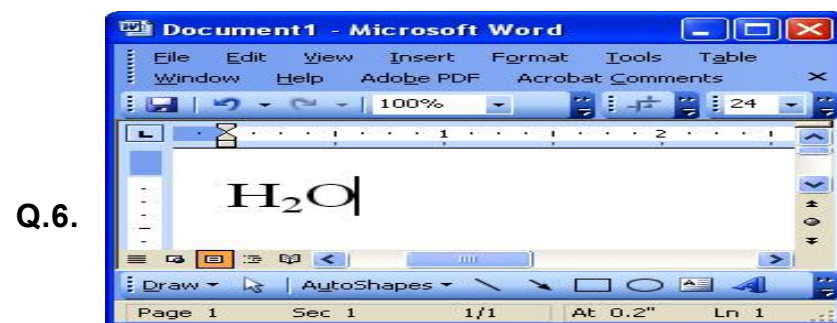
Syllabus Guidelines: The World of Internet; World Wide Web; Internet Usage; HTML (Hyper Text Markup Language); MS-Access

- Q.1.** Which one is the most common format for Photograph in Internet?
 (a) GIF (b) MPEG (c) JPEG (d) BMP



Which one of the following (with reference to the figure given above) is called Search Engine?
 (a) 2 (b) 3 (c) 1 (d) None of these.

- Q.3.** Computer does not understand English Language. Which program helps it to understand high level Language?
 (a) Compiler (b) C Language (c) Hardware (d) None of these.
- Q.4.** A numbering system that is made up of 1's and 0's that the computer uses to understand all letters, numbers, symbol, lines and colours that can be entered into the computer is.
 (a) binary code (b) canary code (c) zero-one system (d) units.
- Q.5.** In URL, 'http://www.edusys.in/exam/alertpage.aspx' 'exam' is a
 (a) Protocol (b) Host Computer name
 (c) Directory (d) Top level domain.



Raghav is making his science project. During typing the project, there is a word "H₂O". He does not know how to write 2 in the MS-word, with which one of the following option he would be able to

write 2 as shown in figure.

- (a) Go to in font format menu and click on Subscript. (b) Go to cell and click on Subscript
 (c) Go to in font format menu and click on Superscript (d) Go to cell and click on Superscript.

Q.7. Dot-matrix is a type of :-

- (a) Tape (b) Printer (c) Disk (d) Bus.

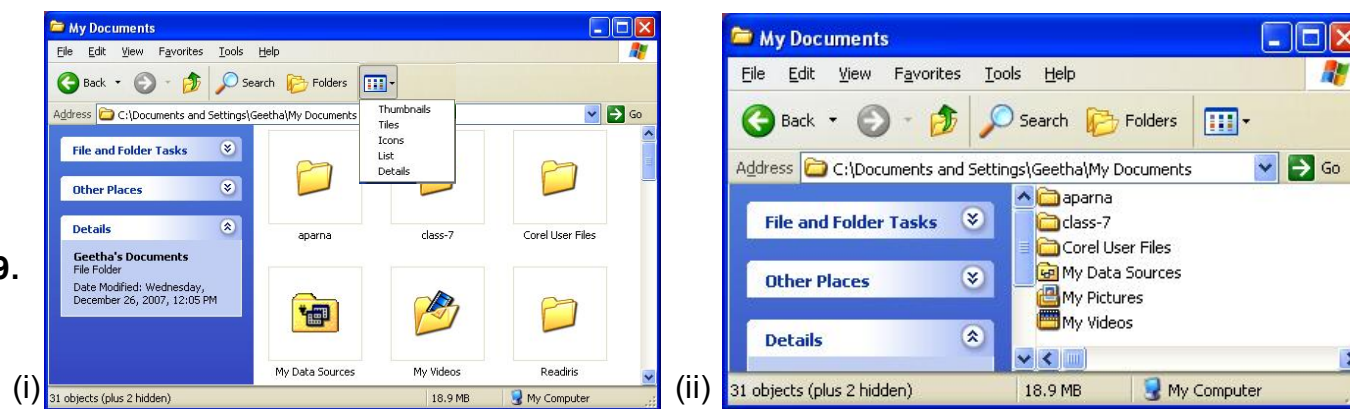
Q.8.

Marksheet of the year 2008				
Code No.	MS-Word	MS-Excel	P.Point	Total
A001	75	60	55	190
A002	55	75	65	195
A003	65	50	70	185
A004	50	60	55	165

Nikil wants to edit the text written in first row of the table. Which of the following he has to do to bring the cursor in this row?

- (a) right click in that row (b) double click in that cell/row
 (c) both of these (d) none of these

Q.9.



Two windows (i) and (ii) as shown above. Geetha arranged her folders as shown in figure (ii). Which one of the following has been selected?

- (a) Thumbnails (b) Tiles (c) Icons (d) List.

Q.10. The word, "Modem" stand for

- (a) Modern equipment (b) Modulate-demodulate
 (c) Medium emphasis (d) Modular emphasis.

ANSWER KEY

1. (c) 2. (a) 3. (a) 4. (a) 5. (c)
 6. (a) 7. (b) 8. (b) 9. (d) 10. (b)